

# TUFFLEY ROVERS AFC

27 December 2025 3:00PM KO UHLSPORT HELLENIC LEAGUE, PREMIER DIVISION



TUFFLEY ROVERS

VS



LONGLEVENS



uhlsport



**A&R**  
Light Haulage<sup>Ltd</sup>

## SUPPORTERS OF TUFFLEY ROVERS FOOTBALL CLUB

### Offering:

- Flatbed truck pallet service
- Same / next day delivery
  - Courier services
  - 24 hour service
  - Fully insured
- Support for house removals

[arlighthaulageltd@yahoo.co.uk](mailto:arlighthaulageltd@yahoo.co.uk)  
[www.arhaulage.net](http://www.arhaulage.net)



@a\_rhaulage

Rich: 07792188695

Adam: 07969978491

# FROM THE EDITOR:



Welcome to all our visitors to Glevum Park this afternoon. I hope everyone had a good Christmas.

26 December 2016 is the last time we beat Longlevens at Glevum Park. Yes, that's right. 2016.

We've won at Saw Mills several times, including the reverse of this fixture back in August, but we just don't seem to be able to record a win here. Earlier this season we lost 2-0 in the FA Vase, this time last year it was a 2-0 defeat in the Hellenic League. An August Bank Holiday game in 2023 saw us lose 2-0 and on this date in 2022 we succumbed to a 4-0 defeat. 2021 saw a Longlevens win (1-0) in December and we also managed to lose a 'Covid Cup' tie 3-2 back in April 2021.

We lost twice at home in the 2018/19 season, when we hosted an FA Vase replay in addition to the League fixture, whilst in October 2017 we lost 1-0 in our home League fixture.

All of that – a run of nine defeats at home – since Warren Mann's winner secured all three points on 26 December 2016. Before that we'd lost the only other two games between the clubs in the Hellenic League.

Away from home it is a very different story, with five wins, four defeats and four draws from our meetings at Saw Mills. That having been said, whatever has happened across the course of each season, Longlevens have the better record and it will take more than one swallow today to make a summer. Today is, however, an opportunity to take a step in the right direction. May the best team win.

Our season won't be defined by today's game but it would be great to end 2025 on a high and with an 8 match unbeaten run. The lads have been great recently and as both Muzzy and Booner reflect in their articles, we've recently developed a knack for winning games when not at our best.

Thank you to everyone for their support during 2025. I hope to see you all again in 2026.

I hope everyone enjoys the game. Safe travels home and all the best for 2026.

- Neil

*#upthrovers*

---



# DREAMSHED *theatre*

Need help with an important presentation?

As well as producing a range of theatrical events for more than twenty years, Dreamshed also offers affordable specialised training for individuals or groups wishing to enhance their confidence in public speaking. Whether it's work-related or an important personal event such as a wedding speech, help is at hand! If required assistance is also available with writing your script.

Bill Cronshaw, Dreamshed's Artistic Director, is an experienced professional actor, director and writer. Contact him on 07771 965985 for more information.

**SPONSORS OF TUFFLEY ROVERS 2025/26 SEASON**

## FIXTURES

**Saturday, 27 December 2025**

Uhlisport Hellenic League, Premier Division

Highworth Town v Pershore Town

Cirencester Town v Royal Wootton Bassett Town

Cribbs v Roman Glass St George

Droitwich Spa v Worcester Raiders

Fairford Town v Corsham Town

Hallen v Mangotsfield United

Hereford Pegasus v Westfields

Slimbridge v Lydney Town

Thornbury Town v Cinderford Town

Tuffley Rovers v Longlevens

# **FROM THE CHAIRMAN:**



Good afternoon and welcome to Glevum Park for this Hellenic League fixture against Longlevens. May I first take this opportunity to welcome our visitors' supporters, committee, management team and players. An extended warm welcome to the match officials who will be facilitating the game today.

A huge "thank you" must go to the staff and volunteers that have been working over the Christmas period for the club, as without their commitment and support none of this is possible.

The first team have been on a good run of form coming into today's game and even when we haven't played well we have still managed to get positive results, so that has been really good to see from the squad.

The game against Lydney Town last Saturday was far from our best but the lads dug-in and secured the three points, and more importantly kept a clean sheet. Away from the first team we have seen a really good season for all teams so far, and the general feel across the club has been very good.

With our off-site social club development now completed, a project that followed our significant investment on the drainage system on the main pitch here, we are hoping to secure funding support in the near future to be able to upgrade our floodlights and further down the track a redevelopment of the facilities here at Glevum Park. We are committed to improving what we offer, both on and off the field.

We currently have a promotion for hiring our 1929 Suite at our other site on Tuffley Lane. For further information, please see me or email [gm@tuffleyroversfc.co.uk](mailto:gm@tuffleyroversfc.co.uk).

I hope everyone enjoys this afternoon's hospitality and have a safe journey home.

Thanks,

- Dan Boon

*#uptherovers*

---



# TUFFLEY ROVERS CLUB HISTORY



The late Donald E Hall founded Tuffley Rovers FC in 1929. The Club's Headquarters were in a former railway carriage, which served as Mr Hall's Boot and Shoe repair shop on the Stroud Road at Tuffley in the City Of Gloucester. The Club started its playing life in the North Gloucestershire League. Senior XI Championship honours include that of the North Gloucestershire League and Stroud and District League (4 times) and in 1987/1988 the Club were Champions of the Gloucestershire Northern Senior League and gained promotion to the Gloucestershire County League.

After two seasons of consolidation the Club won the County League Title in 1990/1991, their application to join the Hellenic League was successful and they were accepted into Hellenic Division One. Progress continued as in the 1992/1993 season Rovers were Champions of Division One and also Division One League Cup Winners and after promotion competed in the Premier Division of the Hellenic League from 1993/1994, regularly finishing in the top half of the table. The 1998/1999 season saw Tuffley win the Norman Matthew's Floodlit Cup defeating Carterton Town in the final. Whilst the Club enjoyed this success, the 2nd XI and 3rd XI also gained promotion and championship honours. The 1998/1999 season saw the 2nd XI win the Northern Senior League and reach the finals of both the County Cup and League Cup, unfortunately losing out on both occasions. Promotion, however, was not possible as reserve teams were not allowed at that point to enter the Gloucestershire County League and progress further up the pyramid system.

The Club continued to thrive in the Hellenic League and managed to win the Floodlit Cup again in the 2002/2003 season defeating Brackley Town over two legs in the final. However, the ever-changing ground grading requirements, if the club was to remain in the Hellenic League, and the financial strain these improvements imposed on the Club forced Tuffley Rovers to make the decision to withdraw from the Hellenic League in 2005 and settle for local football in Gloucestershire.

After a difficult start Rovers were crowned champions of Division 2 of the Northern Senior League in the 2005/2006 season and were promoted to Division 1. After a slow start the team put together a consistent run and managed to claim the Division 1 Title as well as win the GFA Senior Amateur Cup and reach the final of the Reg Davis Memorial League Cup.

A return to the Gloucestershire County League followed and the club finished a very creditable 4th place (2007/8) but the summer of 2008 saw a number of senior players retire. Over the next few seasons, an evolving squad finished 11<sup>th</sup>, 3<sup>rd</sup>, 6<sup>th</sup> and 3<sup>rd</sup> in the County League, before the 2012/13 Season marked an improvement for the club. After challenging for league championship honours all season, the club couldn't quite maintain the form to secure the title, finishing second. However, this was enough to gain promotion to the Hellenic League Division One (West) for the 2013/14 season.

On their return to the Hellenic League, The Rovers saw a season that witnessed some turmoil – including the departure of manager, Doug Foxwell – to record a decent sixth place finish and some good cup results. This was followed up with the Runners'-up spot in 2014/15 and promotion back to the Hellenic Premier Division, exactly ten years after they had withdrawn from the League.

The first season saw a struggle against relegation, ultimately resulting in the resignation of Warren Evans as manager, before the club retained their status due to a vacancy in the league, after finishing 17<sup>th</sup>. Mark Pritchett was then appointed as Player/Manager and took the side to consecutive 10<sup>th</sup> placed finishes, before a 15<sup>th</sup> place finish in 2018/19. Two pandemic affected seasons then passed, with Pritchett leaving the club part-way through. Rich Cox took over as Manager for a single season, but resigned midway through 2021/22 after a disastrous run of results. Former Manchester United player Neil Mustoe then took over, steering the club away from danger (finishing in 17<sup>th</sup> place).

Mustoe achieved an 18<sup>th</sup> place finish at the end of the 2022/23 season, his first full campaign, before achieving a healthy 14<sup>th</sup> place in 2023/24, with a much improved squad. The 2024/25 season ended with further improvement, as Mustoe's squad finished in 11<sup>th</sup> place.

# FROM THE MANAGER:



Good afternoon and welcome to all players, management, officials, and supporters from Longlevens.

I hope everyone here today and those who can't attend but are reading this have enjoyed the Christmas period.

We recorded another great result against Lydney Town last week, which means we have now gone seven games unbeaten in all competitions. Last week's game was particularly pleasing to see, as we were up against a team who were up there with the best in the division as far as the form table is concerned.

Today's fixture presents us with a similar challenge and we will need to give an even better performance. After an indifferent start to the 2025/26 season Longlevens have been on a very good run of results and they will be a very tough opponent. We've also played them twice this season already, in the League and FA Vase, with mixed results, so we know what we need to do regarding our preparations for this game.

I think unofficially this is an anniversary of four years since I became Tuffley Rovers manager, as I was in the dugout for the game against Longlevens on that occasion. Over that time we have improved our performances, results and league placing each season and that is a trend I would like to continue.

The game today can hopefully see us put in a positive performance and get a result that will finish off 2025 in the perfect way.

Enjoy the game. Thank you for your support.

- Muzz

*#uptherovers*







# HELLENIC LEAGUE PREMIER DIVISION TABLE

Up to and including 20 December 2025

|     |                            |    | Home |   |   |    |    | Away |   |   |    |    | Overall |   |    |    |    |     |     |
|-----|----------------------------|----|------|---|---|----|----|------|---|---|----|----|---------|---|----|----|----|-----|-----|
| Pos | Team                       | P  | W    | D | L | F  | A  | W    | D | L | F  | A  | W       | D | L  | F  | A  | GD  | PTS |
| 1   | Roman Glass St George      | 25 | 9    | 1 | 2 | 33 | 12 | 6    | 3 | 4 | 25 | 22 | 15      | 4 | 6  | 58 | 34 | 24  | 49  |
| 2   | Slimbridge                 | 20 | 8    | 1 | 1 | 26 | 11 | 7    | 1 | 2 | 25 | 9  | 15      | 2 | 3  | 51 | 20 | 31  | 47  |
| 3   | Droitwich Spa              | 22 | 9    | 1 | 1 | 29 | 12 | 4    | 4 | 3 | 19 | 21 | 13      | 5 | 4  | 48 | 33 | 15  | 44  |
| 4   | Corsham Town               | 21 | 7    | 2 | 2 | 19 | 13 | 6    | 0 | 4 | 18 | 12 | 13      | 2 | 6  | 37 | 25 | 12  | 41  |
| 5   | Cirencester Town           | 22 | 6    | 2 | 3 | 31 | 16 | 5    | 3 | 3 | 20 | 16 | 11      | 5 | 6  | 51 | 32 | 19  | 38  |
| 6   | Worcester Raiders          | 20 | 6    | 2 | 2 | 23 | 10 | 5    | 2 | 3 | 15 | 10 | 11      | 4 | 5  | 38 | 20 | 18  | 37  |
| 7   | Hereford Pegasus           | 21 | 5    | 1 | 6 | 26 | 25 | 5    | 1 | 3 | 19 | 17 | 10      | 2 | 9  | 45 | 42 | 3   | 32  |
| 8   | Longlevens AFC             | 20 | 7    | 0 | 2 | 23 | 9  | 2    | 4 | 5 | 15 | 18 | 9       | 4 | 7  | 38 | 27 | 11  | 31  |
| 9   | Tuffley Rovers             | 22 | 6    | 0 | 5 | 21 | 15 | 3    | 3 | 5 | 12 | 20 | 9       | 3 | 10 | 33 | 35 | -2  | 30  |
| 10  | Westfields                 | 21 | 5    | 2 | 4 | 23 | 20 | 4    | 1 | 5 | 13 | 24 | 9       | 3 | 9  | 36 | 44 | -8  | 30  |
| 11  | Fairford Town              | 19 | 2    | 6 | 2 | 11 | 11 | 5    | 0 | 4 | 17 | 13 | 7       | 6 | 6  | 28 | 24 | 4   | 27  |
| 12  | Mangotsfield United        | 21 | 4    | 0 | 5 | 11 | 11 | 3    | 5 | 4 | 14 | 16 | 7       | 5 | 9  | 25 | 27 | -2  | 26  |
| 13  | Highworth Town             | 22 | 4    | 4 | 3 | 15 | 12 | 2    | 3 | 6 | 10 | 17 | 6       | 7 | 9  | 25 | 29 | -4  | 25  |
| 14  | Pershore Town              | 20 | 3    | 2 | 5 | 10 | 13 | 3    | 1 | 6 | 12 | 22 | 6       | 3 | 11 | 22 | 35 | -13 | 21  |
| 15  | Cinderford Town            | 18 | 2    | 4 | 3 | 12 | 14 | 3    | 1 | 5 | 11 | 17 | 5       | 5 | 8  | 23 | 31 | -8  | 20  |
| 16  | Lydney Town                | 22 | 4    | 2 | 6 | 16 | 18 | 1    | 2 | 7 | 11 | 35 | 5       | 4 | 13 | 27 | 53 | -26 | 19  |
| 17  | Thornbury Town             | 21 | 2    | 6 | 3 | 15 | 16 | 2    | 0 | 8 | 7  | 24 | 4       | 6 | 11 | 22 | 40 | -18 | 18  |
| 18  | Royal Wootton Bassett Town | 21 | 3    | 4 | 4 | 13 | 18 | 1    | 2 | 7 | 12 | 30 | 4       | 6 | 11 | 25 | 48 | -23 | 18  |
| 19  | Hallen                     | 19 | 3    | 2 | 3 | 18 | 16 | 0    | 4 | 7 | 8  | 22 | 3       | 6 | 10 | 26 | 38 | -12 | 15  |
| 20  | Cribbs                     | 21 | 1    | 2 | 7 | 12 | 24 | 2    | 4 | 5 | 13 | 22 | 3       | 6 | 12 | 25 | 46 | -21 | 15  |

# PLAYER SPONSORSHIP 2025

We are grateful to all the companies, supporters and other benevolent i



**LUKE  
MERCHANT**



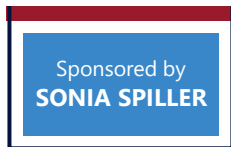
**ROBIN  
HOFFLAND**



**ALEX  
HAMMOND**



**ELLIS  
CLIFFORD**



**JOSS  
LYNDEN**



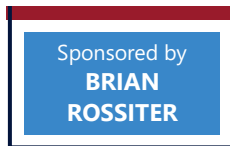
**MARK  
PRITCHETT**



**MACAULAY  
HERBERT**



**ELIJAH  
SIMPSON**



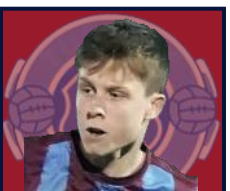
**DANIEL  
LANDER**



**HARLEY  
MUSTOE**



**WARREN  
MANN**



**SAM  
KELLY**



# 5/26

Individuals who have sponsored the first team squad this season.



**LIAM  
SMITH**



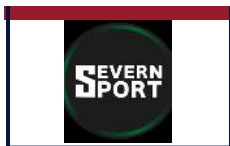
**CALLUM  
McGUIRK**



**COREY  
WARRINGTON**



**KIERAN  
ALDER**



**VLAD  
YARMOLENKO**



**BRAD  
BEVAN**



**CONNOR  
WALTERS**



**KARNELL  
CHAMBERS**



**OLI  
BARNES**



**JAMIE  
CREED**



**GINO  
VALENTI**



**PRESTON  
MASON**





**CALLUM  
McLEAN**



**SAMMIE  
HICKS**



**NEIL  
MUSTOE**



**LIAM  
O'NEILL**



**MIKE  
DE BEAR**



**ALEX  
BUTLER**



**ANDREW  
MOODY**



**KAYLEIGH  
BROWN**





Mechanical

Installation

Heating Services (Glos) Limited

[www.mihltd.co.uk](http://www.mihltd.co.uk)

*We Are Proud to*  
**SPONSOR**



*Good Luck Tuffley Rovers*

### COMMERCIAL & INDUSTRIAL HVAC SERVICES

Trusted by MOD • NHS • Schools • Colleges • Offices • Factories &  
More

- ✓ Design • Installation • Testing • Commissioning
- ✓ Air Source Heat Pumps
- ✓ Gas Heating & Steam Systems
- ✓ Ventilation & Air Conditioning
- ✓ BMS Controls
- ✓ Hot & Cold Water Systems
- ✓ Above Ground Drainage

No project too big or small.

We pride ourselves on high-quality, reliable installations –  
every time.

01242 678822



[www.mihltd.co.uk](http://www.mihltd.co.uk)



# TUFFLEY ROVERS AFC – 2025/26



# HALF-TIME QUIZ: BREAK FOR FIVE



Grab a cup of tea and something to eat, then spend the five minutes of your half-time break trying to answer these questions. As ever, there is a theme and today it is all about 2025, as we look back over the past year in football...

1. Erling Haaland is pictured scoring against Fulham this year, to bring up 100 Premier League goals, making him the fastest player to reach that feat. Three parts to this question: (i) how many games did he take? (ii) which player's record did he beat?; and (iii) how many games fewer did he take to reach that record?



2. Chelsea won the 2025 FIFA World Club Cup held in the United States, although they did not win their group during the group stage. Can you identify the Brazilian team that finished above Enzo Maresca's side in Group D?

3. The England national football team played ten times during 2025, winning nine of the games. Can you name the side (pictured) who inflicted a 3-1 defeat on Thomas Tuchel's side in June?



4. The largest transfer fee during 2025 saw Bayer Leverkusen paid a reported £107M for an attacking player. Who was that player and which club signed him?

5. The Women's UEFA European Championships took place in 2025, with England running out as the tournament winners. Can you name the three players pictured below who ran out with the individual player awards for Top Scorer, Player of the Tournament and Young Player of the Tournament?



(A)



(B)



(C)

**Quiz Answers:** (1) Haaland scored his 100th goal in his 11th game, beating Alan Shearer's record by 13 games. (2) Flamengo; (3) Senegal; (4) It was Florian Wirtz, who moved from Leverkusen to Liverpool; (5) A – Esther Gonzalez; B – Michelle Agyemang; C – Altana Bonmati.

# STATISTICS 2025/26

## Competition

Uhlspport Hellenic Premier Division, unless stated

FAC = FA Cup; FAV = FA Vase; GFA = GFA Challenge Trophy;

MSCC = Marsh Sports Challenge Cup;

WLFC = Wiseman Lighting Floodlit Cup; SC = Supplementary Cup

| 2025   |  | Att       | Scorers                                  |
|--------|--|-----------|--|
| 29/Jul | 7:45pm Cribbs FC                           | H 2-1 120 | H Mustoe, K Chambers                     |
| 02/Aug | 3pm Hartpury FC FAC                        | A 2-1 104 | C Warrington, O Barnes (pen)             |
| 09/Aug | 3pm Fairford Town                          | H 3-1 129 | H Mustoe, K Chambers (2)                 |
| 12/Aug | 7:45pm Mangotsfield United                 | H 1-3 140 | K Alder                                  |
| 16/Aug | 3pm Flackwell Heath FAC                    | A 0-1 210 | -  |
| 19/Aug | 7:45pm Hereford Pegasus                    | H 2-0 136 | J Creed (2)                              |
| 23/Aug | 3pm Longlevens FAV                         | H 0-2 206 | -  |
| 25/Aug | 3pm Longlevens                             | A 1-0 310 | K Chambers                               |
| 30/Aug | 3pm Thornbury Town                         | H 1-2 87  | M Herbert                                |
| 06/Sep | 3pm Corsham Town                           | A 0-1 140 | -  |
| 09/Sep | 7:45pm Lydney Town                         | A 4-1 127 | O Barnes (2), P Mason, J Creed           |
| 13/Sep | 3pm Pershore Town                          | H 1-2 103 | C Walters                                |
| 20/Sep | 3pm Westfields                             | A 2-7 112 | O Barnes (pen), C Warrington             |
| 27/Sep | 3pm Royal Wootton Bassett Town             | A 2-1 85  | K Chambers, J Creed                      |
| 04/Oct | 3pm Cirencester Town                       | H 0-2 117 | -  |
| 11/Oct | 3pm Roman Glass St George                  | H 2-3 103 | G Valenti, H Mustoe                      |
| 18/Oct | 3pm Mangotsfield United                    | A 1-2 230 | K Chambers                               |
| 25/Oct | 3pm Hereford Pegasus                       | A 0-0 121 | -  |
| 28/Oct | 7:45pm Slimbridge                          | A 0-3 174 | -  |
| 08/Nov | 3pm Cirencester Town                       | A 0-3 158 | -  |
| 11/Nov | 7:45pm Cheltenham Saracens GFA             | A 2-3 55  | H Mustoe, K Alder                        |
| 15/Nov | 3pm Highworth Town                         | H 2-1 101 | B Bevan, K Chambers (pen)                |
| 18/Nov | 7:45pm Eversley & California Reserves HLCC | H H-W -   | -  |
| 22/Nov | 3pm Fairford Town                          | A 1-1 120 | K Chambers                               |
| 25/Nov | 7:45pm Shortwood United WLFC               | A 3-2 44  | G Valenti, C Warrington, C Walters       |
| 29/Nov | 3pm Droitwich Spa                          | A 1-1 149 | K Alder                                  |
| 06/Dec | 3pm Worcester Raiders                      | H 4-0 90  | B Bevan (2), K Alder (2)                 |
| 13/Dec | 3pm Droitwich Spa HLCC                     | H 2-1 83  | K Alder, K Chambers                      |
| 20/Dec | 3pm Lydney Town                            | H 3-0 149 | C Warrington, H Mustoe, K Chambers (pen) |
| 27/Dec | 3pm Longlevens                             | H         |  |
| 2026   |  |           |  |
| 03/Jan | 3pm Thornbury Town                         | A         |  |
| 10/Jan | 3pm Cinderford Town                        | H         |  |
| 13/Jan | 7:45pm Cribbs FC WLFC                      | H         |  |
| 17/Jan | 3pm Royal Wootton Bassett Town             | H         |  |
| 24/Jan | 2pm Highworth Town                         | A         |  |
| 31/Jan | 3pm Corsham Town                           | H         |  |
| 07/Feb | 3pm Hallen                                 | A         |  |
| 21/Feb | 3pm Westfields                             | H         |  |
| 28/Feb | 3pm Worcester Raiders                      | A         |  |
| 14/Mar | 3pm Droitwich Spa                          | H         |  |
| 21/Mar | 3pm Pershore Town                          | A         |  |
| 28/Mar | 3pm Roman Glass St George                  | A         |  |
| 04/Apr | 3pm Cribbs FC                              | A         |  |
| 06/Apr | 3pm Slimbridge                             | H         |  |
| 11/Apr | 3pm Hallen                                 | H         |  |
| 18/Apr | 3pm Cinderford Town                        | A         |  |

## Goalscorers

|                  |    |                  |   |
|------------------|----|------------------|---|
| Karnell Chambers | 10 | Brad Bevan       | 3 |
| Kieran Alder     | 6  | Connor Walters   | 2 |
| Harley Mustoe    | 5  | Gino Valenti     | 2 |
| Oli Barnes       | 4  | Macaulay Herbert | 1 |
| Jamie Creed      | 4  | Preston Mason    | 1 |
| Corey Warrington | 4  |                  |   |

## TOTAL APPEARANCES

### STARTS

### SUBSTITUTE

### UNUSED SUBSTITUTE



| Merchant, Luke |   | McLean, Callum |   | Clifford, Ellis |   | Simpson, Elijah |   | Herbert, Macaulay |    | McGuirk, Callum |    | Warrington, Corey |    | Mustoe, Harley |    | Chambers, Karnell |    | Bevan, Bradley |    | Barnes, Oli |    | Pritchett, Mark |    | Lynden, Joss |    | Creed, Jamie |    | Walters, Connor |    | Yarmolenko, Vladyslav |    | Alder, Kieran |    | Venna, Kaelen |    | Lander, Daniel |    | Jones, Zak |    | Smith, Liam |    | Mason, Preston |    | Hoffland, Robin |    | Valenti, Gino |    | Kelly, Sam |    | Kaye, Tom |    | Hammond, Alex |    | Shyamapant, Joe |    | Mayo, Ellis |    | Sanniola, Jorell |    | MoM |    |    |    |    |    |    |    |    |    |    |    |    |    |    |    |    |    |    |    |    |    |    |    |    |    |    |    |    |    |    |    |    |    |    |    |    |    |    |     |     |     |     |     |     |     |     |     |     |     |     |     |     |     |     |     |     |     |     |     |     |     |     |     |     |     |     |     |     |     |     |     |     |     |     |     |     |     |     |     |     |     |     |     |     |     |     |     |     |     |     |     |     |     |     |     |     |     |     |     |     |     |     |     |     |     |     |     |     |     |     |     |     |     |     |     |     |     |     |     |     |     |     |     |     |     |     |     |     |     |     |     |     |     |     |     |     |     |     |     |     |     |     |     |     |     |     |     |     |     |     |     |     |     |     |     |     |     |     |     |     |     |     |     |     |     |     |     |     |     |     |     |     |     |     |     |     |     |     |     |     |     |     |     |     |     |     |     |     |     |     |     |     |     |     |     |     |     |     |     |     |     |     |     |     |     |     |     |     |     |     |     |     |     |     |     |     |     |     |     |     |     |     |     |     |     |     |     |     |     |     |     |     |     |     |     |     |     |     |     |     |     |     |     |     |     |     |     |     |     |     |     |     |     |     |     |     |     |     |     |     |     |     |     |     |     |     |     |     |     |     |     |     |     |     |     |     |     |     |     |     |     |     |     |     |     |     |     |     |     |     |     |     |     |     |     |     |     |     |     |     |     |     |     |     |     |     |     |     |     |     |     |     |     |     |     |     |     |     |     |     |     |     |     |     |     |     |     |     |     |     |     |     |     |     |     |     |     |     |     |     |     |     |     |     |     |     |     |     |     |     |     |     |     |     |     |     |     |     |     |     |     |     |     |     |     |     |     |     |     |     |     |     |     |     |     |     |     |     |     |     |     |     |     |     |     |     |     |     |     |     |     |     |     |     |     |     |     |     |     |     |     |     |     |     |     |     |     |     |     |     |     |     |     |     |     |     |     |     |     |     |     |     |     |     |     |     |     |     |     |     |     |     |     |     |     |     |     |     |     |     |     |     |     |     |     |     |     |     |     |     |     |     |     |     |     |     |     |     |     |     |     |     |     |     |     |     |     |     |     |     |     |     |     |     |     |     |     |     |     |     |     |     |     |     |     |     |     |     |     |     |     |     |     |     |     |     |     |     |     |     |     |     |     |     |     |     |     |     |     |     |     |     |     |     |     |     |     |     |     |     |     |     |     |     |     |     |     |     |     |     |     |     |     |     |     |     |     |     |     |     |     |     |     |     |     |     |     |     |     |     |     |     |     |     |     |     |     |     |     |     |     |     |     |     |     |     |     |     |     |     |     |     |     |     |     |     |     |     |     |     |     |     |     |     |     |     |     |     |     |     |     |     |     |     |     |     |     |     |     |     |     |     |     |     |     |     |     |     |     |     |     |     |     |     |     |     |     |     |     |     |     |     |     |     |     |     |     |     |     |     |     |     |     |     |     |     |     |     |     |     |     |     |     |     |     |     |     |     |     |     |     |     |     |     |     |     |     |     |     |     |     |     |     |     |     |     |     |     |     |     |     |     |     |     |     |     |     |     |     |     |     |     |     |     |     |     |     |     |     |     |     |     |     |     |     |     |     |     |     |     |     |     |     |     |     |     |     |     |     |     |     |     |     |     |     |     |     |     |     |     |     |     |     |     |     |     |     |     |     |     |     |     |     |     |     |     |     |     |     |     |     |     |     |     |     |     |     |     |     |     |     |     |     |     |     |     |     |     |     |     |     |     |     |     |     |     |     |     |     |     |     |     |     |     |     |     |     |     |     |     |     |     |     |     |     |     |     |     |     |     |     |     |     |     |     |     |     |     |     |     |     |     |     |     |     |     |     |     |     |     |     |     |     |     |     |     |     |     |     |     |     |     |     |     |     |     |     |     |     |     |     |     |     |     |     |     |     |     |     |     |     |     |     |     |     |     |     |     |     |     |     |     |     |     |     |     |     |     |     |     |     |     |     |     |     |     |     |     |     |     |     |     |     |     |     |     |     |     |     |     |     |     |     |     |     |     |     |     |     |     |     |     |     |     |     |     |     |     |     |     |     |     |     |     |     |     |     |     |     |     |     |     |     |     |     |     |     |     |     |     |     |     |     |     |     |     |     |     |     |     |     |     |     |     |     |     |     |     |      |      |      |      |      |      |      |      |      |      |      |      |      |      |      |      |      |      |      |      |      |      |      |      |      |      |      |      |      |      |      |      |      |      |      |      |      |      |      |      |      |      |      |      |      |      |      |      |      |      |      |      |      |      |      |      |      |      |      |      |      |      |      |      |      |      |      |      |      |      |      |      |      |      |      |      |      |      |      |      |      |      |      |      |      |      |      |      |      |      |      |      |      |      |      |      |      |      |      |      |      |      |      |      |      |      |      |      |      |      |      |      |      |      |      |      |      |      |      |      |      |      |      |      |      |      |      |      |      |      |      |      |      |      |      |      |      |      |      |      |      |      |      |      |      |      |      |      |      |      |      |      |      |      |      |      |      |      |      |      |      |      |      |      |      |      |      |      |      |      |      |      |      |      |      |      |      |      |      |      |      |      |      |      |      |      |      |      |      |      |      |      |      |      |      |      |      |      |      |      |      |      |      |      |      |      |      |      |      |      |      |      |      |      |      |      |      |      |      |      |      |      |      |      |      |      |      |      |      |      |      |      |      |      |      |      |      |      |      |      |      |      |      |      |      |      |      |      |      |      |      |      |      |      |      |      |      |      |      |      |      |      |      |      |      |      |      |      |      |      |      |      |      |      |      |      |      |      |      |      |      |      |      |      |      |      |      |      |      |      |      |      |      |      |      |      |      |      |      |      |      |      |      |      |      |      |      |      |      |      |      |      |      |      |      |      |      |      |      |      |      |      |      |      |      |      |      |      |      |      |      |      |      |      |      |      |      |      |      |      |      |      |      |      |      |      |      |      |      |      |      |      |      |      |      |      |      |      |      |      |      |      |   |
|----------------|---|----------------|---|-----------------|---|-----------------|---|-------------------|----|-----------------|----|-------------------|----|----------------|----|-------------------|----|----------------|----|-------------|----|-----------------|----|--------------|----|--------------|----|-----------------|----|-----------------------|----|---------------|----|---------------|----|----------------|----|------------|----|-------------|----|----------------|----|-----------------|----|---------------|----|------------|----|-----------|----|---------------|----|-----------------|----|-------------|----|------------------|----|-----|----|----|----|----|----|----|----|----|----|----|----|----|----|----|----|----|----|----|----|----|----|----|----|----|----|----|----|----|----|----|----|----|----|----|----|----|----|----|-----|-----|-----|-----|-----|-----|-----|-----|-----|-----|-----|-----|-----|-----|-----|-----|-----|-----|-----|-----|-----|-----|-----|-----|-----|-----|-----|-----|-----|-----|-----|-----|-----|-----|-----|-----|-----|-----|-----|-----|-----|-----|-----|-----|-----|-----|-----|-----|-----|-----|-----|-----|-----|-----|-----|-----|-----|-----|-----|-----|-----|-----|-----|-----|-----|-----|-----|-----|-----|-----|-----|-----|-----|-----|-----|-----|-----|-----|-----|-----|-----|-----|-----|-----|-----|-----|-----|-----|-----|-----|-----|-----|-----|-----|-----|-----|-----|-----|-----|-----|-----|-----|-----|-----|-----|-----|-----|-----|-----|-----|-----|-----|-----|-----|-----|-----|-----|-----|-----|-----|-----|-----|-----|-----|-----|-----|-----|-----|-----|-----|-----|-----|-----|-----|-----|-----|-----|-----|-----|-----|-----|-----|-----|-----|-----|-----|-----|-----|-----|-----|-----|-----|-----|-----|-----|-----|-----|-----|-----|-----|-----|-----|-----|-----|-----|-----|-----|-----|-----|-----|-----|-----|-----|-----|-----|-----|-----|-----|-----|-----|-----|-----|-----|-----|-----|-----|-----|-----|-----|-----|-----|-----|-----|-----|-----|-----|-----|-----|-----|-----|-----|-----|-----|-----|-----|-----|-----|-----|-----|-----|-----|-----|-----|-----|-----|-----|-----|-----|-----|-----|-----|-----|-----|-----|-----|-----|-----|-----|-----|-----|-----|-----|-----|-----|-----|-----|-----|-----|-----|-----|-----|-----|-----|-----|-----|-----|-----|-----|-----|-----|-----|-----|-----|-----|-----|-----|-----|-----|-----|-----|-----|-----|-----|-----|-----|-----|-----|-----|-----|-----|-----|-----|-----|-----|-----|-----|-----|-----|-----|-----|-----|-----|-----|-----|-----|-----|-----|-----|-----|-----|-----|-----|-----|-----|-----|-----|-----|-----|-----|-----|-----|-----|-----|-----|-----|-----|-----|-----|-----|-----|-----|-----|-----|-----|-----|-----|-----|-----|-----|-----|-----|-----|-----|-----|-----|-----|-----|-----|-----|-----|-----|-----|-----|-----|-----|-----|-----|-----|-----|-----|-----|-----|-----|-----|-----|-----|-----|-----|-----|-----|-----|-----|-----|-----|-----|-----|-----|-----|-----|-----|-----|-----|-----|-----|-----|-----|-----|-----|-----|-----|-----|-----|-----|-----|-----|-----|-----|-----|-----|-----|-----|-----|-----|-----|-----|-----|-----|-----|-----|-----|-----|-----|-----|-----|-----|-----|-----|-----|-----|-----|-----|-----|-----|-----|-----|-----|-----|-----|-----|-----|-----|-----|-----|-----|-----|-----|-----|-----|-----|-----|-----|-----|-----|-----|-----|-----|-----|-----|-----|-----|-----|-----|-----|-----|-----|-----|-----|-----|-----|-----|-----|-----|-----|-----|-----|-----|-----|-----|-----|-----|-----|-----|-----|-----|-----|-----|-----|-----|-----|-----|-----|-----|-----|-----|-----|-----|-----|-----|-----|-----|-----|-----|-----|-----|-----|-----|-----|-----|-----|-----|-----|-----|-----|-----|-----|-----|-----|-----|-----|-----|-----|-----|-----|-----|-----|-----|-----|-----|-----|-----|-----|-----|-----|-----|-----|-----|-----|-----|-----|-----|-----|-----|-----|-----|-----|-----|-----|-----|-----|-----|-----|-----|-----|-----|-----|-----|-----|-----|-----|-----|-----|-----|-----|-----|-----|-----|-----|-----|-----|-----|-----|-----|-----|-----|-----|-----|-----|-----|-----|-----|-----|-----|-----|-----|-----|-----|-----|-----|-----|-----|-----|-----|-----|-----|-----|-----|-----|-----|-----|-----|-----|-----|-----|-----|-----|-----|-----|-----|-----|-----|-----|-----|-----|-----|-----|-----|-----|-----|-----|-----|-----|-----|-----|-----|-----|-----|-----|-----|-----|-----|-----|-----|-----|-----|-----|-----|-----|-----|-----|-----|-----|-----|-----|-----|-----|-----|-----|-----|-----|-----|-----|-----|-----|-----|-----|-----|-----|-----|-----|-----|-----|-----|-----|-----|-----|-----|-----|-----|-----|-----|-----|-----|-----|-----|-----|-----|-----|-----|-----|-----|-----|-----|-----|-----|-----|-----|-----|-----|-----|-----|-----|-----|-----|-----|-----|-----|-----|-----|-----|-----|-----|-----|-----|-----|-----|-----|-----|-----|-----|-----|-----|-----|-----|-----|-----|-----|-----|-----|-----|-----|-----|-----|-----|-----|-----|-----|-----|-----|-----|-----|-----|-----|-----|-----|-----|-----|-----|-----|-----|-----|-----|-----|-----|-----|-----|-----|-----|-----|-----|-----|-----|-----|-----|-----|-----|-----|-----|-----|-----|-----|-----|-----|-----|-----|-----|-----|-----|-----|-----|-----|-----|-----|-----|-----|-----|-----|-----|-----|-----|-----|-----|-----|-----|-----|-----|-----|-----|-----|-----|-----|-----|-----|-----|-----|-----|-----|-----|-----|-----|-----|-----|-----|-----|-----|-----|-----|-----|-----|-----|-----|-----|-----|-----|-----|-----|-----|-----|-----|-----|-----|-----|-----|-----|-----|-----|-----|-----|-----|-----|-----|-----|-----|-----|-----|-----|-----|-----|-----|-----|-----|-----|-----|-----|-----|-----|-----|-----|-----|-----|-----|-----|-----|-----|-----|-----|-----|-----|-----|-----|-----|-----|-----|-----|-----|-----|-----|-----|-----|-----|-----|-----|-----|-----|-----|-----|-----|-----|-----|-----|-----|-----|-----|-----|-----|-----|-----|-----|-----|-----|-----|-----|-----|-----|-----|-----|-----|-----|-----|-----|-----|-----|-----|-----|-----|-----|-----|-----|-----|-----|-----|-----|-----|-----|-----|-----|-----|-----|-----|-----|-----|-----|-----|-----|-----|-----|-----|-----|-----|-----|-----|------|------|------|------|------|------|------|------|------|------|------|------|------|------|------|------|------|------|------|------|------|------|------|------|------|------|------|------|------|------|------|------|------|------|------|------|------|------|------|------|------|------|------|------|------|------|------|------|------|------|------|------|------|------|------|------|------|------|------|------|------|------|------|------|------|------|------|------|------|------|------|------|------|------|------|------|------|------|------|------|------|------|------|------|------|------|------|------|------|------|------|------|------|------|------|------|------|------|------|------|------|------|------|------|------|------|------|------|------|------|------|------|------|------|------|------|------|------|------|------|------|------|------|------|------|------|------|------|------|------|------|------|------|------|------|------|------|------|------|------|------|------|------|------|------|------|------|------|------|------|------|------|------|------|------|------|------|------|------|------|------|------|------|------|------|------|------|------|------|------|------|------|------|------|------|------|------|------|------|------|------|------|------|------|------|------|------|------|------|------|------|------|------|------|------|------|------|------|------|------|------|------|------|------|------|------|------|------|------|------|------|------|------|------|------|------|------|------|------|------|------|------|------|------|------|------|------|------|------|------|------|------|------|------|------|------|------|------|------|------|------|------|------|------|------|------|------|------|------|------|------|------|------|------|------|------|------|------|------|------|------|------|------|------|------|------|------|------|------|------|------|------|------|------|------|------|------|------|------|------|------|------|------|------|------|------|------|------|------|------|------|------|------|------|------|------|------|------|------|------|------|------|------|------|------|------|------|------|------|------|------|------|------|------|------|------|------|------|------|------|------|------|------|------|------|------|------|------|------|------|------|------|------|------|------|------|------|------|------|------|------|------|------|------|------|------|------|------|------|------|------|------|------|------|------|------|------|------|------|------|------|------|---|
| 1              | 2 | 3              | 4 | 5               | 6 | 7               | 8 | 9                 | 10 | 11              | 12 | 13                | 14 | 15             | 16 | 17                | 18 | 19             | 20 | 21          | 22 | 23              | 24 | 25           | 26 | 27           | 28 | 29              | 30 | 31                    | 32 | 33            | 34 | 35            | 36 | 37             | 38 | 39         | 40 | 41          | 42 | 43             | 44 | 45              | 46 | 47            | 48 | 49         | 50 | 51        | 52 | 53            | 54 | 55              | 56 | 57          | 58 | 59               | 60 | 61  | 62 | 63 | 64 | 65 | 66 | 67 | 68 | 69 | 70 | 71 | 72 | 73 | 74 | 75 | 76 | 77 | 78 | 79 | 80 | 81 | 82 | 83 | 84 | 85 | 86 | 87 | 88 | 89 | 90 | 91 | 92 | 93 | 94 | 95 | 96 | 97 | 98 | 99 | 100 | 101 | 102 | 103 | 104 | 105 | 106 | 107 | 108 | 109 | 110 | 111 | 112 | 113 | 114 | 115 | 116 | 117 | 118 | 119 | 120 | 121 | 122 | 123 | 124 | 125 | 126 | 127 | 128 | 129 | 130 | 131 | 132 | 133 | 134 | 135 | 136 | 137 | 138 | 139 | 140 | 141 | 142 | 143 | 144 | 145 | 146 | 147 | 148 | 149 | 150 | 151 | 152 | 153 | 154 | 155 | 156 | 157 | 158 | 159 | 160 | 161 | 162 | 163 | 164 | 165 | 166 | 167 | 168 | 169 | 170 | 171 | 172 | 173 | 174 | 175 | 176 | 177 | 178 | 179 | 180 | 181 | 182 | 183 | 184 | 185 | 186 | 187 | 188 | 189 | 190 | 191 | 192 | 193 | 194 | 195 | 196 | 197 | 198 | 199 | 200 | 201 | 202 | 203 | 204 | 205 | 206 | 207 | 208 | 209 | 210 | 211 | 212 | 213 | 214 | 215 | 216 | 217 | 218 | 219 | 220 | 221 | 222 | 223 | 224 | 225 | 226 | 227 | 228 | 229 | 230 | 231 | 232 | 233 | 234 | 235 | 236 | 237 | 238 | 239 | 240 | 241 | 242 | 243 | 244 | 245 | 246 | 247 | 248 | 249 | 250 | 251 | 252 | 253 | 254 | 255 | 256 | 257 | 258 | 259 | 260 | 261 | 262 | 263 | 264 | 265 | 266 | 267 | 268 | 269 | 270 | 271 | 272 | 273 | 274 | 275 | 276 | 277 | 278 | 279 | 280 | 281 | 282 | 283 | 284 | 285 | 286 | 287 | 288 | 289 | 290 | 291 | 292 | 293 | 294 | 295 | 296 | 297 | 298 | 299 | 300 | 301 | 302 | 303 | 304 | 305 | 306 | 307 | 308 | 309 | 310 | 311 | 312 | 313 | 314 | 315 | 316 | 317 | 318 | 319 | 320 | 321 | 322 | 323 | 324 | 325 | 326 | 327 | 328 | 329 | 330 | 331 | 332 | 333 | 334 | 335 | 336 | 337 | 338 | 339 | 340 | 341 | 342 | 343 | 344 | 345 | 346 | 347 | 348 | 349 | 350 | 351 | 352 | 353 | 354 | 355 | 356 | 357 | 358 | 359 | 360 | 361 | 362 | 363 | 364 | 365 | 366 | 367 | 368 | 369 | 370 | 371 | 372 | 373 | 374 | 375 | 376 | 377 | 378 | 379 | 380 | 381 | 382 | 383 | 384 | 385 | 386 | 387 | 388 | 389 | 390 | 391 | 392 | 393 | 394 | 395 | 396 | 397 | 398 | 399 | 400 | 401 | 402 | 403 | 404 | 405 | 406 | 407 | 408 | 409 | 410 | 411 | 412 | 413 | 414 | 415 | 416 | 417 | 418 | 419 | 420 | 421 | 422 | 423 | 424 | 425 | 426 | 427 | 428 | 429 | 430 | 431 | 432 | 433 | 434 | 435 | 436 | 437 | 438 | 439 | 440 | 441 | 442 | 443 | 444 | 445 | 446 | 447 | 448 | 449 | 450 | 451 | 452 | 453 | 454 | 455 | 456 | 457 | 458 | 459 | 460 | 461 | 462 | 463 | 464 | 465 | 466 | 467 | 468 | 469 | 470 | 471 | 472 | 473 | 474 | 475 | 476 | 477 | 478 | 479 | 480 | 481 | 482 | 483 | 484 | 485 | 486 | 487 | 488 | 489 | 490 | 491 | 492 | 493 | 494 | 495 | 496 | 497 | 498 | 499 | 500 | 501 | 502 | 503 | 504 | 505 | 506 | 507 | 508 | 509 | 510 | 511 | 512 | 513 | 514 | 515 | 516 | 517 | 518 | 519 | 520 | 521 | 522 | 523 | 524 | 525 | 526 | 527 | 528 | 529 | 530 | 531 | 532 | 533 | 534 | 535 | 536 | 537 | 538 | 539 | 540 | 541 | 542 | 543 | 544 | 545 | 546 | 547 | 548 | 549 | 550 | 551 | 552 | 553 | 554 | 555 | 556 | 557 | 558 | 559 | 560 | 561 | 562 | 563 | 564 | 565 | 566 | 567 | 568 | 569 | 570 | 571 | 572 | 573 | 574 | 575 | 576 | 577 | 578 | 579 | 580 | 581 | 582 | 583 | 584 | 585 | 586 | 587 | 588 | 589 | 590 | 591 | 592 | 593 | 594 | 595 | 596 | 597 | 598 | 599 | 600 | 601 | 602 | 603 | 604 | 605 | 606 | 607 | 608 | 609 | 610 | 611 | 612 | 613 | 614 | 615 | 616 | 617 | 618 | 619 | 620 | 621 | 622 | 623 | 624 | 625 | 626 | 627 | 628 | 629 | 630 | 631 | 632 | 633 | 634 | 635 | 636 | 637 | 638 | 639 | 640 | 641 | 642 | 643 | 644 | 645 | 646 | 647 | 648 | 649 | 650 | 651 | 652 | 653 | 654 | 655 | 656 | 657 | 658 | 659 | 660 | 661 | 662 | 663 | 664 | 665 | 666 | 667 | 668 | 669 | 670 | 671 | 672 | 673 | 674 | 675 | 676 | 677 | 678 | 679 | 680 | 681 | 682 | 683 | 684 | 685 | 686 | 687 | 688 | 689 | 690 | 691 | 692 | 693 | 694 | 695 | 696 | 697 | 698 | 699 | 700 | 701 | 702 | 703 | 704 | 705 | 706 | 707 | 708 | 709 | 710 | 711 | 712 | 713 | 714 | 715 | 716 | 717 | 718 | 719 | 720 | 721 | 722 | 723 | 724 | 725 | 726 | 727 | 728 | 729 | 730 | 731 | 732 | 733 | 734 | 735 | 736 | 737 | 738 | 739 | 740 | 741 | 742 | 743 | 744 | 745 | 746 | 747 | 748 | 749 | 750 | 751 | 752 | 753 | 754 | 755 | 756 | 757 | 758 | 759 | 760 | 761 | 762 | 763 | 764 | 765 | 766 | 767 | 768 | 769 | 770 | 771 | 772 | 773 | 774 | 775 | 776 | 777 | 778 | 779 | 780 | 781 | 782 | 783 | 784 | 785 | 786 | 787 | 788 | 789 | 790 | 791 | 792 | 793 | 794 | 795 | 796 | 797 | 798 | 799 | 800 | 801 | 802 | 803 | 804 | 805 | 806 | 807 | 808 | 809 | 810 | 811 | 812 | 813 | 814 | 815 | 816 | 817 | 818 | 819 | 820 | 821 | 822 | 823 | 824 | 825 | 826 | 827 | 828 | 829 | 830 | 831 | 832 | 833 | 834 | 835 | 836 | 837 | 838 | 839 | 840 | 841 | 842 | 843 | 844 | 845 | 846 | 847 | 848 | 849 | 850 | 851 | 852 | 853 | 854 | 855 | 856 | 857 | 858 | 859 | 860 | 861 | 862 | 863 | 864 | 865 | 866 | 867 | 868 | 869 | 870 | 871 | 872 | 873 | 874 | 875 | 876 | 877 | 878 | 879 | 880 | 881 | 882 | 883 | 884 | 885 | 886 | 887 | 888 | 889 | 890 | 891 | 892 | 893 | 894 | 895 | 896 | 897 | 898 | 899 | 900 | 901 | 902 | 903 | 904 | 905 | 906 | 907 | 908 | 909 | 910 | 911 | 912 | 913 | 914 | 915 | 916 | 917 | 918 | 919 | 920 | 921 | 922 | 923 | 924 | 925 | 926 | 927 | 928 | 929 | 930 | 931 | 932 | 933 | 934 | 935 | 936 | 937 | 938 | 939 | 940 | 941 | 942 | 943 | 944 | 945 | 946 | 947 | 948 | 949 | 950 | 951 | 952 | 953 | 954 | 955 | 956 | 957 | 958 | 959 | 960 | 961 | 962 | 963 | 964 | 965 | 966 | 967 | 968 | 969 | 970 | 971 | 972 | 973 | 974 | 975 | 976 | 977 | 978 | 979 | 980 | 981 | 982 | 983 | 984 | 985 | 986 | 987 | 988 | 989 | 990 | 991 | 992 | 993 | 994 | 995 | 996 | 997 | 998 | 999 | 1000 | 1001 | 1002 | 1003 | 1004 | 1005 | 1006 | 1007 | 1008 | 1009 | 1010 | 1011 | 1012 | 1013 | 1014 | 1015 | 1016 | 1017 | 1018 | 1019 | 1020 | 1021 | 1022 | 1023 | 1024 | 1025 | 1026 | 1027 | 1028 | 1029 | 1030 | 1031 | 1032 | 1033 | 1034 | 1035 | 1036 | 1037 | 1038 | 1039 | 1040 | 1041 | 1042 | 1043 | 1044 | 1045 | 1046 | 1047 | 1048 | 1049 | 1050 | 1051 | 1052 | 1053 | 1054 | 1055 | 1056 | 1057 | 1058 | 1059 | 1060 | 1061 | 1062 | 1063 | 1064 | 1065 | 1066 | 1067 | 1068 | 1069 | 1070 | 1071 | 1072 | 1073 | 1074 | 1075 | 1076 | 1077 | 1078 | 1079 | 1080 | 1081 | 1082 | 1083 | 1084 | 1085 | 1086 | 1087 | 1088 | 1089 | 1090 | 1091 | 1092 | 1093 | 1094 | 1095 | 1096 | 1097 | 1098 | 1099 | 1100 | 1101 | 1102 | 1103 | 1104 | 1105 | 1106 | 1107 | 1108 | 1109 | 1110 | 1111 | 1112 | 1113 | 1114 | 1115 | 1116 | 1117 | 1118 | 1119 | 1120 | 1121 | 1122 | 1123 | 1124 | 1125 | 1126 | 1127 | 1128 | 1129 | 1130 | 1131 | 1132 | 1133 | 1134 | 1135 | 1136 | 1137 | 1138 | 1139 | 1140 | 1141 | 1142 | 1143 | 1144 | 1145 | 1146 | 1147 | 1148 | 1149 | 1150 | 1151 | 1152 | 1153 | 1154 | 1155 | 1156 | 1157 | 1158 | 1159 | 1160 | 1161 | 1162 | 1163 | 1164 | 1165 | 1166 | 1167 | 1168 | 1169 | 1170 | 1171 | 1172 | 1173 | 1174 | 1175 | 1176 | 1177 | 1178 | 1179 | 1180 | 1181 | 1182 | 1183 | 1184 | 1185 | 1186 | 1187 | 1188 | 1189 | 1190 | 1191 | 1192 | 1193 | 1194 | 1195 | 1196 | 1197 | 1198 | 1199 | 1200 | 1201 | 1202 | 1203 | 1204 | 1205 | 1206 | 1207 | 1208 | 1209 | 1210 | 1211 | 1212 | 1213 | 1214 | 1215 | 1216 | 1217 | 1218 | 1219 | 1220 | 1221 | 1222 | 1223 | 1224 | 1225 | 1226 | 1227 | 1228 | 1229 | 1230 | 1231 | 1232 | 1233 | 1234 | 1235 | 1236 | 1237 | 1238 | 1239 | 1240 | 1241 | 1242 | 1243 | 1244 | 1245 | 1246 | 1247 | 1248 | 1249 | 1250 | 1251 | 1252 | 1253 | 1254 | 1255 | 1256 | 1257 | 1258 | 1259 | 1260 | 1261 | 1262 | 1263 | 1264 | 1265 | 1266 | 1267 | 1268 | 1269 | 1270 | 1271 | 1272 | 1273 | 1274 | 1275 | 1276 | 1277 | 1278 | 1279 | 1280 | 1281 | 1282 | 1283 | 1284 | 1285 | 1286 | 1287 | 1288 | 1289 | 1290 | 1291 | 1292 | 1293 | 1294 | 1295 | 1296 | 1297 | 1298 | 1299 | 1300 | 1301 | 1302 | 1303 | 1304 | 1305 | 1306 | 1307 | 1308 | 1309 | 1310 | 1311 | 1312 | 1313 | 1314 | 1315 | 1316 | 1317 | 1318 | 1319 | 1320 | 1321 | 1322 | 1323 | 1324 | 1325 | 1326 | 1327 | 1328 | 1329 | 1330 | 1331 | 1332 | 1333 | 1334 | 1335 | 1336 | 1337 | 1338 | 1339 | 1340 | 1341 | 1342 | 1343 | 1344 | 1345 | 1346 | 1347 | 1348 | 1349 | 1350 | 1351 | 1352 | 1353 | 1354 | 1355 | 1356 | 1357 | 1358 | 1359 | 1360 | 1361 | 1 |



# PLAYER PROFILES 2025/26

## **Luke Merchant**

## **Goalkeeper**

Club captain who returned to the club in the 2022/23 season, after a Hellenic League Premier Division title winning season at Bishops Cleeve. A great shot stopper, commanding presence and accomplished keeper. Holds the club record for Hellenic League appearances as a keeper.

## **Alex Hammond**

## **Goalkeeper**

Join the club in late-October following a serious injury to Luke Merchant and has been a fantastic replacement. Had previously been with Mangotsfield United and is studying at Hartpury. Is a good all-round keeper, with safe hands, good shot stopping and can play with his feet.

## **Robin Hoffland**

## **Goalkeeper**

A long-serving player, despite his age, who acts as a capable back-up to Luke Merchant in goal, whenever needed. Has played for the club's 1sts, 2nds, 3rds, 4ths and 5ths, as well as the U18s and always gives his all. Reliable, in a word.

## **Callum McLean**

## **Defence**

New signing, who has impressed at right-back in pre-season and could prove to be a great addition to the squad. Tough tackling and comfortable on the ball. Came through the U18s at local rivals Longlevens.

## **Elijah Simpson**

## **Defence**

Player under Neil Mustoe at Gloucester City U18s and joined from Brimscombe & Thrupp for 2024/25. Comfortable on the ball when in possession, shows a turn of pace, and good defensively. One of the leaders in the squad.

## **Sam Kelly**

## **Defence**

A cultured, ball playing centre-half who can also play at full-back, who has been a great addition to the squad. Joined from Hartpury after a season at Longlevens in 2024/25. Has impressed since donning the claret and blue this season.

## **Mark Pritchett**

## **Defence**

Tasted Hellenic League title success at Bishops Cleeve. Previously at Rovers as Player / Manager before stepping away from the role in 21/22. Offers a no nonsense, old-fashioned approach in each game and is a threat in the opposition box.

## **Macaulay Herbert**

## **Defence**

Our second longest-serving member of the squad. 'Macca' came through our U18s and is solid and dependable; an excellent defender who has been getting better with every season that passed. Has made over 300 first team appearances, despite several injuries punctuating each season.

## **Ellis Clifford**

## **Defence**

Came through the U18s squad, after joining from Gloucester City's youth set-up. Made a breakthrough in 2023/24 and has now amassed almost 60 appearances at left-back. An improving and emerging talent.

## **Harley Mustoe**

## **Defence/Midfield**

Has gained experience playing County League football for Hardwicke and has held down a regular first team spot after making his debut as a substitute in our first game of 2024/25. Most comfortable in midfield but has played at full-back and looked very accomplished. Young Player of the Year 2024/25.

## **Callum McGuirk**

## **Defence/Midfield**

Signed from Longlevens in 2022, where he'd largely been used at full-back, he is a hard-working midfielder, who looks comfortable on the ball. Played academy football during his earlier years, including a spell at Bristol City. Has become a vital part of the squad.

## **Corey Warrington**

## **Midfield**

Signed at the start of 2024/25 after excelling at Northern Senior League side Tredworth Tigers during 2023/24. A highly energetic midfielder who likes to get on the ball and is well regarded in local football. A real talent.

## **Liam Smith**

## **Midfield**

Has Southern League experience. Calm in possession and possesses a good passing range, although injuries have limited his progress.

## **Mason Preston**

## **Midfield**

Former Forest Green Rovers Academy player recently signed from Hereford Pegasus. Diminutive figure who already looks to be a great addition. Great feet and good energy!



**Warren Mann****Midfield**

Our longest serving player with 543 competitive games at Step 7 and above over a 20 year period. The player opposition players, officials and supporters love to hate! Has played in all positions over the last few seasons and happy to play wherever needed.

**Kieran Alder****Midfield/Forward**

Returned to the club in 2022/23, after spells with Cinderford, Bishops Cleeve and Worcester City; and overcame injuries to return to his best. Gifted No.10, whose work rate is as noticeable as his work on the ball - a creative player. Previously with Neil Mustoe's U18s at Gloucester City reunited at Rovers.

**Karnell Chambers****Forward**

Experienced at a higher level, this is a player who Neil Mustoe was delighted to sign in November 2023. Previously at Gloucester City, Hungerford Town, North Leigh, as well as a spell overseas, and is a goalscorer equally at home wide or in the middle. Finished 24/25 as top scorer for the Firsts with over 20 goals.

**Jorell Sanniola****Forward**

New signing in December 2025 from Stonehouse Town and looks to be a talented young lad. Tall and quick, he is comfortable on the ball and is a natural wide player, who will be looking for a chance to break into the starting line-up.

**Gino Valenti****Forward**

Wide player who joined the club last season and made a handful of first team appearances, before becoming a regular squad member this term. Pacy and good on the ball. A good finisher, who will weigh in with goals when he has the chance.

**Brad Bevan****Forward**

Signed from Fairford Town in 2023/24. Incredibly hardworking, tenacious, a real team player. Runs all day and although not a prolific goalscorer has been a good signing, who regularly contributes a goal. Can play wide or down the centre and is a clever player who has become a vital part of the squad.

**Jamie Creed****Forward**

Signed on a dual registration basis from County League side Gala Wilton last season, he is an old fashioned striker – tall, good with his back to goal and already a regular goalscorer. Still only 17, he is attached to Gloucester City, too, and has the potential to be a star in the future.

**Neil Mustoe****Manager**

Appointed as Manager in January 2022, took the club away from relegation fears in 2021/22, before successfully battling against relegation in 2022/23. Spent many years as a professional at Manchester United, Wigan Athletic, Cambridge United, Stevenage and Yeovil Town, before over 350 appearances for Gloucester City. Previous coaching experience with City before a spell away from the game until his appointment with The Rovers.

**Liam O'Neill****Assistant Manager**

Appointed as Assistant Manager in 2023, after a spell as Manager at Frampton United. Still in the formative stage of his coaching journey but offers great support to Muzzy and is an important presence in the first team set-up.

**Kayleigh Brown****Physio**

Joined in 2025/26 and a good addition to the first team set-up. Also works with the Cheltenham Town Ladies' squad.

**Andrew Moody****GK Coach**

Another new addition for the 2025/26 season, joining as our goalkeeping coach after previous experience with Shortwood United and other local clubs.

**Alex Butler****Coach**

Joined in 2023/24 after previous experience in local football. Mr Reliable and a really positive influence in the dressing room on match-days.

**Tim Hall****Coach**

Formerly with Muzzy at Gloucester City U18s, Tim brings valuable experience and insightful analysis to the coaching team.



# altripan

Quality plywood since 1968

**Europe's leading and independent importer for quality plywood and panel products.**

**Altripan UK Ltd offers quality and reliable products at competitive prices, thanks in part of Altripan Europe's proven track record of knowledge and experience built up over more than 40 years.**

<http://altripanuk.com>



# Severn Signs Ltd

## Signmakers & Digital Print Specialist

**Call Us: 01452 739156**

**Office: Unit R2 Innsworth Technology Park, Innsworth, Gloucester, GL3 1DL**

**Email Us: [info@severnsigns.co.uk](mailto:info@severnsigns.co.uk)**

# Who will you be today?



## Show some Respect



Thousands of referees drop out of the game every season due to abuse.

The uhlSport Hellenic League operate a **ZERO TOLERANCE** policy toward Inappropriate Language & Behaviour

[TheFA.com/Respect](http://TheFA.com/Respect)

# Respect



# HIRE OUR VENUE



The  
*1929 Suite*

Tuffley Rovers Football Club are pleased to be able to offer our new facilities at our Tuffley Lane site to hire for all types of events.

## **Available for:**

- Birthday parties
- Christenings
- Wakes
- Community groups
- Daytime / evening clubs (Weekdays)
- Corporate events
- Coffee mornings

Newly built in 2024 our new facility comes with a private garden area and bar that can accommodate events up to 80 guests.

📍 Tuffley Rovers AFC, Tuffley Lane,  
Gloucester, GL4 0NX

🌐 <http://www.tuffleyroversfc.co.uk>

**Contact us: 07565 342311**  
**[gm@tuffleyroversfc.co.uk](mailto:gm@tuffleyroversfc.co.uk)**





# APPEARANCE INFORMATION

Up to and including Saturday, 20 December 2025

(includes selected list of former players)

2026 is likely to see lots of milestones reached in relation to our player appearance and goalscoring records, with a host of players within touching distance. It is a former Longlevens player who is now perhaps the closest to an appearance milestone, as Callum McGuirk made his 147th competitive first team appearance in our win against Lydney Town, meaning he needs just three more to make it to 150.

In terms of goals, when will Karnell Chambers get that 50th? Could it be today? Here is hoping....



| Name               | Apps | Goals | Name                  | Apps | Goals |
|--------------------|------|-------|-----------------------|------|-------|
| Alder, Kieran      | 194  | 47    | Lander, Daniel        | 51   | 1     |
| Barnes, Oli        | 22   | 9     | Lynden, Joss          | 7    | 0     |
| Bennett, Adam      | 85   | 0     | Mann, Warren          | 543  | 85    |
| Bevan, Bradley     | 91   | 14    | Mason, Preston        | 14   | 1     |
| Birkett, Henry     | 127  | 10    | Mayo, Ellis           | 2    | 0     |
| Bradley, Shayne    | 260  | 117   | McLean, Callum        | 25   | 0     |
| Chambers, Karnell  | 88   | 49    | McGuirk, Callum       | 147  | 0     |
| Clifford, Ellis    | 83   | 0     | Merchant, Luke        | 171  | 0     |
| Creed, Jamie       | 32   | 6     | Middlecote, Martin    | 88   | 2     |
| Davies, Ashley     | 190  | 27    | Mustoe, Harley        | 60   | 9     |
| Dobbins, Ryan      | 87   | 18    | Perks, Christopher    | 92   | 0     |
| Ford, Mark         | 164  | 61    | Pritchett, Mark       | 223  | 29    |
| Foxwell, Marcus    | 302  | 32    | Rhodes, Jake          | 75   | 25    |
| Griffith, Stuart   | 129  | 22    | Sanniola, Jorell      | 3    | 0     |
| Hamilton, Courtney | 178  | 6     | Shyamapant, Joe       | 1    | 0     |
| Hammond, Alex      | 9    | 0     | Simpson, Elijah       | 56   | 0     |
| Haswell, Tristan   | 99   | 1     | Smith, Liam           | 107  | 1     |
| Hoffland, Robin    | 16   | 0     | Squires, Kieran       | 90   | 7     |
| Herbert, Macaulay  | 344  | 11    | Valenti, Gino         | 14   | 3     |
| Hicks, Sammie      | 67   | 2     | Venna, Kaelan         | 3    | 0     |
| Hill, Sam          | 130  | 9     | Wallington, Lee       | 131  | 4     |
| James, Brett       | 186  | 64    | Wallington, Mark      | 220  | 29    |
| James, Richard     | 125  | 40    | Walters, Connor       | 109  | 19    |
| Jones, Zak         | 1    | 0     | Warrington, Corey     | 61   | 4     |
| Kent, Dominik      | 175  | 21    | White, Joel           | 140  | 4     |
| Kaye, Tom          | 1    | 0     | Wright, Liam          | 124  | 3     |
| Kelly, Sam         | 12   | 0     | Yarmolenko, Vladyslav | 2    | 0     |

NB: The figures are correct for all league competitions from season 2007/08, when Tuffley Rovers returned to the County League (Step 7) and include all competitive games since the start of the 2013/14 season. There are some gaps in the information relating to cup games prior to the start of the 2013/14 campaign. This period is currently subject to a thorough review and there may be some variation to statistics in due course.



# LONGLEVENS CLUB HISTORY



The Club, in its current format, was founded in 1954. We initially played in the North Gloucestershire League, but currently we operate in the uhlspport Hellenic League, the Gloucestershire Northern Senior League and the Stroud and District League. Our ladies team operate in the Gloucestershire County Women's League.

In 2011-12, Gloucester City Council created a new football facility and we were fortunate enough to be offered the tenancy, which enabled us to make the step-up to the Gloucestershire County League as our facilities at our Club HQ could not be converted to 'make the grade'. At this point, we must give great credit to E. G. Carter and Company Limited, our major sponsors, because, without them, we could not have got Saw Mills up to the required standard.

In recent years the Club has expanded massively, and we now run five male adult sides, a Ladies side and a Veterans team, our Junior Section covers sides from U8s to U11s, from where players transfer into our Youth Sections to give us continuous cover from U8s through to Veterans. Two seasons ago, we introduced a girls' team and this section continues to expand.

We are recognised as a Two Star FA Accredited Club, the system that has replaced the previously used Charter Standard 'banner'. A special mention here to Dennis Barnsley who has done so much work in respect of the Youth Section, to our Chairman Mark Cornell and Treasurer Chris Trout for putting in so much work to make the expansion of the Junior/Youth Sections happen.

We had spent more than forty years trying to reach the Gloucestershire County League, but amazingly, within three years we had passed through it and gained promotion to the uhlspport Hellenic League, having won the County League in 2013-14 and once again we were indebted to E. G. Carter and Company Limited for helping us upgrade Saw Mills to the required standard.

In 2014/15 we started another new phase for the Club, in Division One West of the uhlspport Hellenic League and what a start! We won the Division at the first attempt, so after three consecutive titles and two consecutive promotions, we found ourselves in the Hellenic Premier Division and have consolidated our position in that Division, which is no mean feat given that the majority of sides we play have a history and an infrastructure that is superior to ours.

In the 2021-22 season, we had our best ever experience in the FA Cup that culminated in us playing Gloucester City – a dream day out for the Club which will live long in the memory – but the past two seasons we were brought back to earth with exits from the FA Cup in the extra preliminary round.

The 2023-24 season saw a 16th place finish however the club did have the best FA Vase run reaching the second round after victories against Keynsham Town, Shortwood United and then a 430 mile round trip to Helston Athletic.

After 4 seasons at the helm, both Michael Palmer and Craig "Spider" Martin stepped down as co-managers having secured our Hellenic League Premier Division status on the last day of the 2024-25 season. Buster Davies and Pete Boyle were appointed as new managers for the 2025-26 season.

# PREVIOUSLY AGAINST TODAY'S OPPOSITION AT GLEVUM PARK (Part 1)

Back on 26 December 2016, a young keeper made his debut for Rovers, a future/now former Rovers keeper was between the sticks for Longlevens, and an evergreen Rover scored the only goal of the game. This was actually our last festive season win at home against Longlevens...

## Match Report

### **TUFFLEY ROVERS 1-0 LONGLEVENS UHLSPORT HELLENIC LEAGUE, PREMIER DIVISION**

Tuffley Rovers took the spoils in the Boxing Day derby clash against Longlevens, as a Warren Mann goal proved sufficient to secure a league double over their closest rivals for the first time since 2011.

Rovers' Manager, Mark Pritchett, was forced into a number of changes due to injuries and unavailability, with keeper/captain Dave Evans and Gareth Jones away for the Christmas period, Will Wellon returning to Evesham United and Shayne Bradley joining Brett James on the long list of players confined to the treatment room.



The paucity of numbers resulted in a debut for 17-year-old Kane Winman, the club's reserve team goalkeeper, alongside fellow debutant, former Cinderford Town player Jake Burns. Ryan Dobbins was rewarded for his prolific season in the Reserves with a starting place, alongside Jamie Goodwin and Mann, in Pritchett's usual 4-3-3 formation.

Longlevens lined up with Forest Green Rovers' Luke Merchant in goal, whilst Antanas Bradzys and Johnny Lee started in two changes from the last outing against Flackwell Heath on 17 December.

Any concerns that the much changed Rovers line-up would struggle to compete in the pressurised environment of a local derby game, played in front of a crowd of 149, were quickly proved unfounded, as they launched a series of attacks on the Levens' goal.

After seven minutes, Mann cut in from the left-hand side, producing a shot that stung Merchant's palms and the young visitors' keeper was on form two minutes later, as he advanced from his goal to deny Goodwin space to shoot.

The front three of Dobbins, Mann and Goodwin were proving a handful for the Longlevens defensive line and continued to create chances on a regular basis. On 11 minutes, Dobbins spurned a terrific chance, as failed to connect effectively with Mann's through-ball and saw the ball drift comfortably towards Merchant, who made a straightforward save.

If the game had been almost one-way traffic, Rovers were reminded of the need to avoid complacency, as a free-kick from Jonty Welch was only half-cleared and almost presented Adam Phillips with a goal, only for Winman to produce a good stop, diving low to his right.

It appeared Phillips' chance acted as a suitable warning to Pritchett's side and two minutes later they took a deserved lead, with a moment of quality. Goodwin cut in from the right, evading Ed Smyllie's challenge and although he struggled to get the ball back under control, he managed to force the ball out to Mann, who was lurking centrally, almost 25 yards out. The diminutive forward took one touch into the space ahead of him and produced a finish that rocketed into the top corner of Merchant's goal, with the Longlevens keeper routed to the spot.

Spurred on by their lead, Rovers continued to press their visitors back, restricting them to unprofitable attempts to counter-attack, and only a combination of wayward finishing and excellent goalkeeping, from Merchant, prevented Rovers extending their lead.

In the closing moments of the half, debutant Burns headed Liam Wright's header towards goal, but Lee managed to head the ball away from under the crossbar and the sides entered the interval with the score still 1-0 to the hosts.

The second period started with Rovers still having the majority of the ball and pressing Longlevens back, although visiting manager, James French, appeared to have roused his troops a little and they earned some set-pieces that allowed them to put Pritchett's side under a little more pressure.

From one corner, Phillips and Rovers' defender Macaulay Herbert challenged for the ball and although the Rovers man did enough to put off his giant opponent, he landed awkwardly, which ended his participation in the game, and he was replaced by Ben Tunnicliff.

Rovers then went on another series of attacks and Tristan Haswell produced a curled effort that went close to Merchant's goal, before Dobbins had one final chance to score, before being replaced by Harry Walker, as he latched onto Mann's clever pass but was unable to slot the ball past the Levens' keeper from close range.

Whether inspired by Merchant's one-man show, which had kept them in the game up until this point, or something else, Longlevens found renewed impetus and started to work their way back into the game.

Brad Martin produced a curling shot that Sam Hill did well to head off the Rovers line and the visitors started to see an increasing share of the ball, particularly after the introduction of Shaun O'Connor from the bench.

If Rovers were starting to feel a sense of pressure, any frayed nerves were stretched further, as midfielder Wright, who had been cautioned in the first-half, saw a red card for a mistimed tackle in the centre of the field, which earned a second caution.

Pritchett juggled his resources, introducing Jack Overthrow for Goodwin, sacrificing an attacking option in the process, and his side battled hard to combat their opponents' one-man advantage.

The plan worked, although O'Connor thought he had scored when he finished off Brad Vanstone's pass, only for the goal to be ruled out for offside, and Pritchett's men were left with the reassurance that they will end 2016 in the top half of the UHlsport Hellenic League, Premier Division table.



# **N (OR AROUND) THIS DAY IN HISTORY...**

Current records date back, fairly accurately, to the 2007/08 season and although there are a few gaps stopping us having a full set of data, it gives us the opportunity to include this programme feature that allows us to reflect on days gone by and fixtures on, or around, today's date.

Since those records began, we've had four games on 27 December which we've reviewed to reflect on our fortunes over the years....

## **27 December 2008**

A woeful performance at home to Yate Town Reserves saw Tuffley Rovers crash to a 4-0 defeat in the Gloucestershire County League, for the second consecutive game. Rovers had a great chance to equalise, when it was 1-0, but Stu Griffith's penalty was weak and easily saved. The visitors then won with ten men, after their keeper was sent-off at 2-0, scoring twice as Rovers chased the game.

**Squad:** Adam Bennett; Robert Cook; Dan Gillespie; Ben Surman; Stuart Griffith; Richard Stevenson; Martin Middlecote; Mark Wallington; Christopher Lee; Patrick Boyd; Warren Mann. **Subs used:** Marcus Foxwell; Peter Thomas.

## **27 December 2014**

Goals from Ashley Davies and Jordan Dowdeswell secured a 2-1 win for Tuffley Rovers over local rivals Longlevens at Saw Mills, in a game played out in front of a crowd of 166.

**Squad:** Aaron Taylor; Marcus Foxwell; Kieran Squires; Macaulay Herbert; Glenn Gittins; Ashley Davies; Jordan Dowdeswell; Stuart Griffith; Jordan Fletcher; Mark Ford; Brett James. **Subs used:** Warren Mann; Courtney Hamilton; Steve Bick.

## **27 December 2021**

Shaun O'Connor's deflected effort past Jack Copland proved to be decisive, as Longlevens left Glevum Park with a 1-0 victory in front of a bumper Christmas crowd of 331.

With Neil Mustoe linking up with the Rovers squad for the first time, after the departure of Rich Cox the previous week, Rovers put in a solid effort but were ultimately undone when O'Connor's effort from just outside the box took a huge deflection off Scott Nicholls and found the net, with Copland already committed to the opposite side of his goal.

Warren Mann was sent-off late on, as Rovers extended their losing sequence to eleven games.

**Squad:** Jack Copland; Liam Wright; Warren Mann; Joshua Aldridge; Jacob Geddes; Scott Nicholls; Lucas Price; Demilade Yussuf; Jamal Lawrence; Dominik Kent; Lewis Bainbridge. **Subs used:** Aaron Basford; Jack Beardsell; Ashley Bird.

## **27 December 2022**

Tuffley Rovers slumped to a 4-0 defeat, despite a superb performance from stand-in goalkeeper Brad Poole, as visitors Longlevens ran riot.

After a fairly even opening, Rovers lost Ashley Davies and Kieran Alder to injury before Brad Martin opened the scoring, with the score remaining 1-0 until the interval. Cam Williams made it 2-0 shortly after the interval, then Levens added further goals from Charlie Holliday and James Barnett to complete the rout.

**Squad:** Brad Poole; Paul Azubilla; Tristan Haswell; Ashley Davies; Macaulay Herbert; Dominik Kent; Henry Birkett; Kieran Alder; Joey Haswell; Shayne Bradley; Warren Mann. **Subs used:** Ryan Dobbins; Liam Smith; Callum McGuirk; Kieran Squires; Daniel Beasley.



# The foundations of sucess.

## With quality in every detail.

Established in 2009, JB Construction 1 Ltd. is one of the fastest growing Civil Engineering and Groundworks contractors in the UK.

From our head office located in the West Midlands, we undertake projects throughout the UK. Thanks to a customer focused approach, our experienced and dedicated team have built our strong reputation by working closely with our clients to safely deliver high quality, value-engineered projects, on time.

[jbconstruction1.co.uk](http://jbconstruction1.co.uk)







Sole retail partner to the Hellenic League  
In Partnership With uhlsport

We offer free  
Club Web Shops

*COMPETITIVE DEALS*  
*WIDE RANGE OF*  
*OFFERINGS*

- MATCH KIT
- TRAINING KIT
- OFF-FIELD
- ACCESSORIES
- BALLS & EQUIPMENT



[www.batemanssports.co.uk](http://www.batemanssports.co.uk)  
[kevin@batemanssports.co.uk](mailto:kevin@batemanssports.co.uk)  
01453 764320  
2 KENDRICK STREET, STROUD,  
GLOS, GL5 1AB

**We are proud suppliers to the  
Uhsport Hellenic League  
and welcome the chance to help  
out any associated clubs with quality trophies,  
medals, cups, plaques, glass, engraving and more!**

**Call us for more details.**



**Allsports  
Trophies  
Limited**

**[www.allsportstrophies.com](http://www.allsportstrophies.com)**

**Unit G3, Eastern Zone,  
Kingston Bagpuize Business Park,  
Abingdon, Oxfordshire, OX13 5FE  
e-mail: [chris@allsportstrophies.com](mailto:chris@allsportstrophies.com)**

**Tel: 01865736028**

**uhlsport® Official Match Ball Supplier  
to the Hellenic League**



**[www.uhlsport.com](http://www.uhlsport.com)**



TUFFLEY ROVERS

LONGLEEVENS



|                  |    |                   |
|------------------|----|-------------------|
| Alex Hammond     | 1  | Drew Brei         |
| Callum McLean    | 2  | Jack Beardsell    |
| Ellis Clifford   | 3  | Jack Byard        |
| Sam Kelly        | 4  | Oliver Long ©     |
| Elijah Simpson   | 5  | Daniel Roddis     |
| Callum McGuirk   | 6  | Cameron Williams  |
| Corey Warrington | 7  | Ryan Williams     |
| Harley Mustoe    | 8  | Jack Holmes       |
| Karnell Chambers | 9  | Lewis Driscoll    |
| Kieran Alder ©   | 10 | Shiyak Sutherland |
| Brad Bevan       | 11 | Finlay Gwillim    |
| Jorell Sanniola  | 12 | Soyam Sherchan    |
| Jamie Creed      | 14 | Jay Wells         |
| Gino Valenti     | 15 | Alex Knight       |
| Macaulay Herbert | 16 | Fin Rankin        |
| Ellis Mayo       | 17 | Brad Martin       |
| Joe Shyamapant   | 18 | Thomas Spencer    |
| Preston Mason    | 19 | Archie Myatt      |
| Luke Merchant    | 20 | Billy Thomas      |

Claret & Blue shirts; Claret shorts; Claret & White socks (GK: Orange)

Red shirts; Black shorts; Black socks (GK: White)

|   |                 |   |
|---|-----------------|---|
| Neil Mustoe   | MANAGER         | Buster Davies & Pete Boyle                  |
| Liam O'Neill  | ASST. MANAGER   |   |
| Kayleigh Brown (Physio)<br>Andrew Moody (GK Coach)<br>Alex Butler (Coach)<br>Tim Hall (Coach) | OTHER OCCUPANTS | Kane Winman (Coach)<br>Jake Edwards (Coach) |

| OFFICIALS  |                |            |
|------------|----------------|------------|
| Liam Brace | Alan Overthrow | Carl Beard |